



NEPTUNE WHARF

INDICATIVE

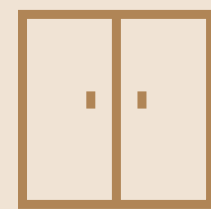
DUPLEX & PENTHOUSE APARTMENT

[NEPTUNEWHARFLONDON.COM](https://neptunewharflondon.com)

IN YOUR

DUPLEX APARTMENT

Sophisticated and versatile, our two-bedroom duplex apartments are designed for modern living split across two spacious levels. With well-defined living and sleeping areas, they offer the perfect balance of privacy and openness, ideal for families. Elegant finishes and generous proportions create a welcoming home that blends comfort, style, and functionality.



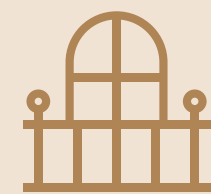
FULLY FITTED
WARDROBES



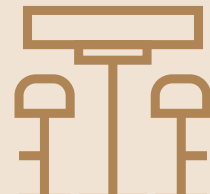
SMEG INTEGRATED
APPLIANCES



FREE 1GB
WI-FI



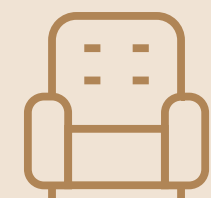
PRIVATE
BALCONY



KITCHEN
ISLAND*



INSTA-BOIL
TAP



FURNISHED OR
UNFURNISHED



FLOOR TO
CEILING WINDOWS



SPLIT-LEVEL
LIVING

*SUBJECT TO AVAILABILITY





INDICATIVE
DUPLEX
APARTMENT

01 LIVING/DINING

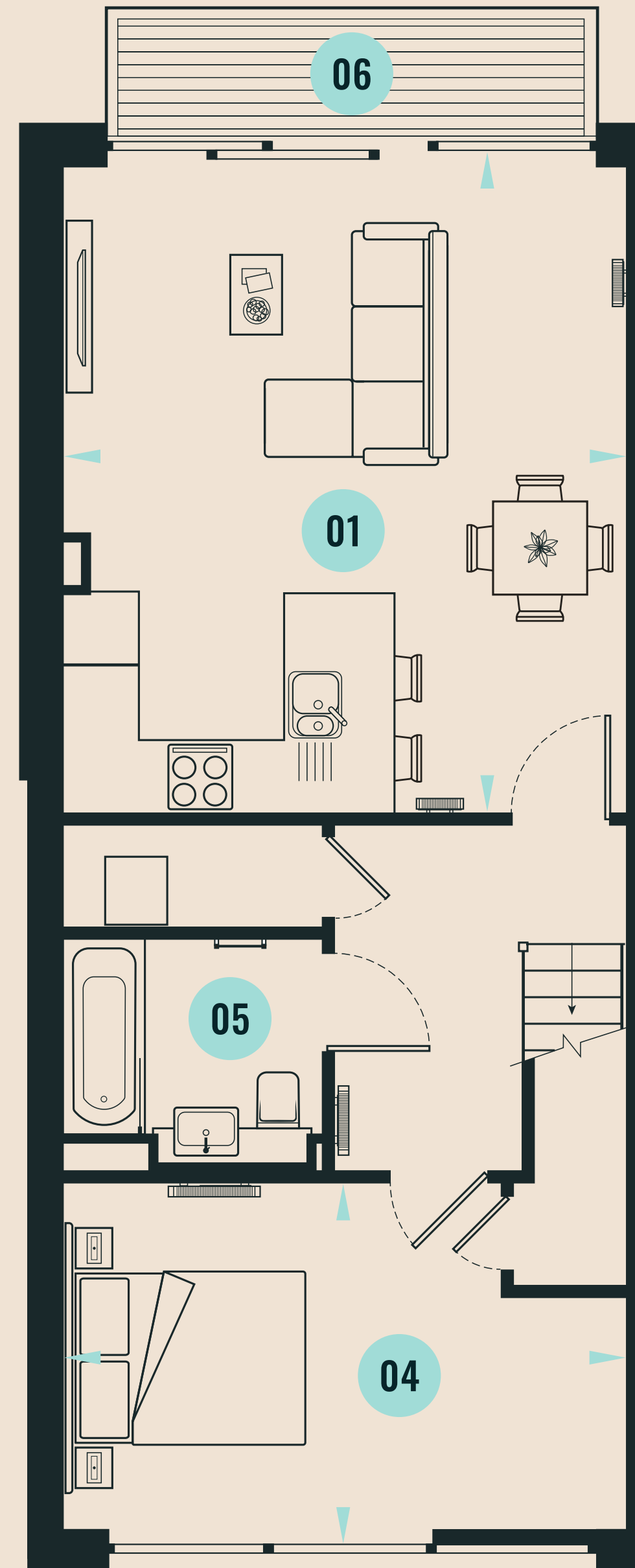
02 BEDROOM 1

03 SHOWER ROOM

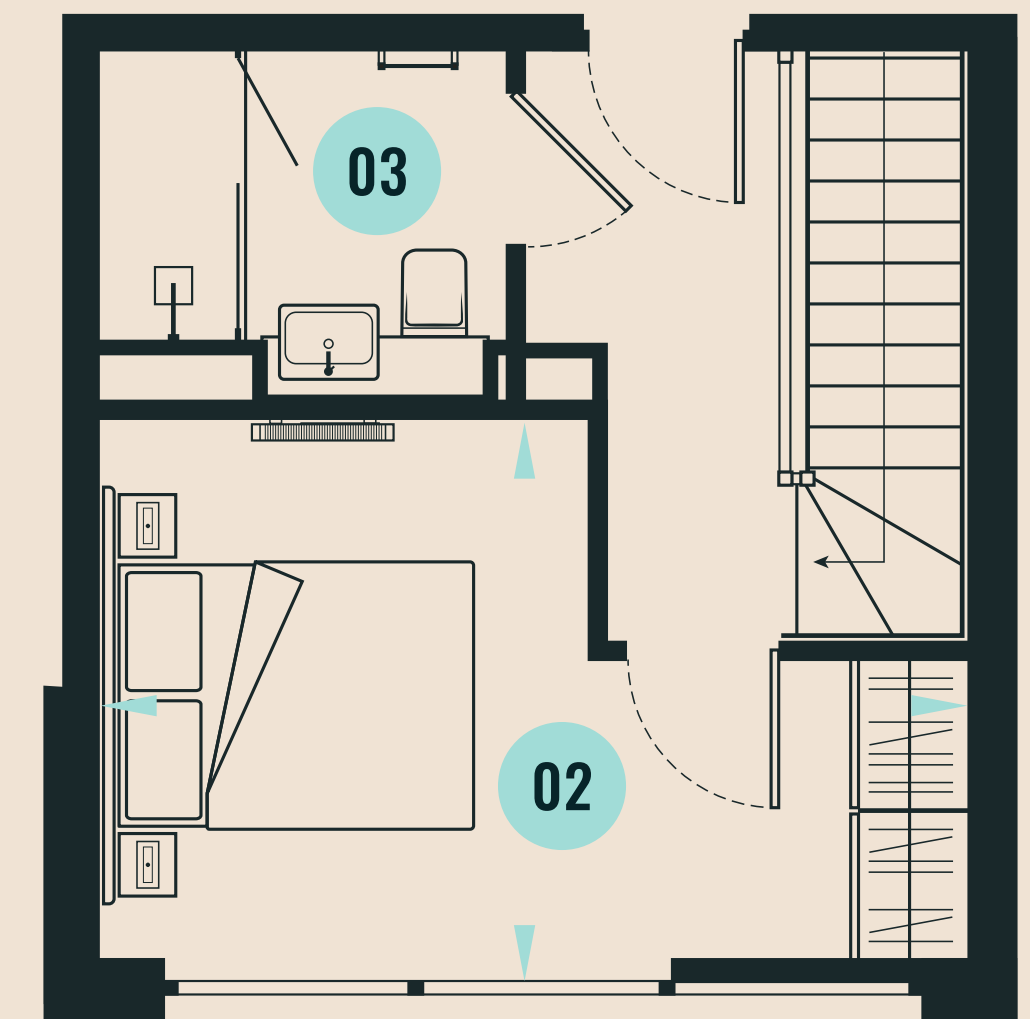
04 BEDROOM 2

05 BATHROOM

06 BALCONY



Lower
Level



Upper
Level

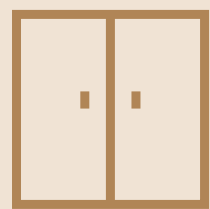
PHOTOGRAPHY IS INTENDED FOR ILLUSTRATIVE PURPOSES ONLY AND SHOULD BE TREATED AS GENERAL GUIDANCE ONLY. ALL THE PARTICULARS IN THIS BROCHURE WERE CORRECT AT TIME OF PRODUCTION.

Customers should note these illustrations are an example of this apartment type. Furniture layout is for illustrative purposes only. Homes may be 'handed' (mirror image) versions of the illustrations. Detailed plans and specifications are available for inspection for each unit type and customers must check their individual specifications prior to making a reservation.

IN YOUR

PENTHOUSE APARTMENT

Elegant and expansive, our two-bedroom penthouse apartments offer an elevated sense of space and comfort with the added benefit of a large terrace. Thoughtfully designed interiors provide a calm retreat, with open-plan living areas that invite relaxation or entertaining alike. Each home is finished to a high standard, combining contemporary style with practical modern living.



FULLY FITTED
WARDROBES



SMEG INTEGRATED
APPLIANCES



FREE 1GB
WI-FI



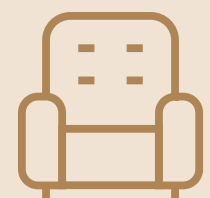
PRIVATE
BALCONY



KITCHEN
ISLAND*



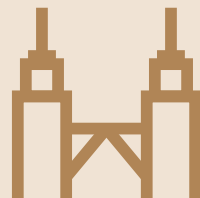
INSTA-BOIL
TAP



FURNISHED OR
UNFURNISHED



FLOOR TO
CEILING WINDOWS



PARK & SKYLINE
VIEWS

*SUBJECT TO AVAILABILITY





INDICATIVE
PENTHOUSE
APARTMENT

01 LIVING/DINING

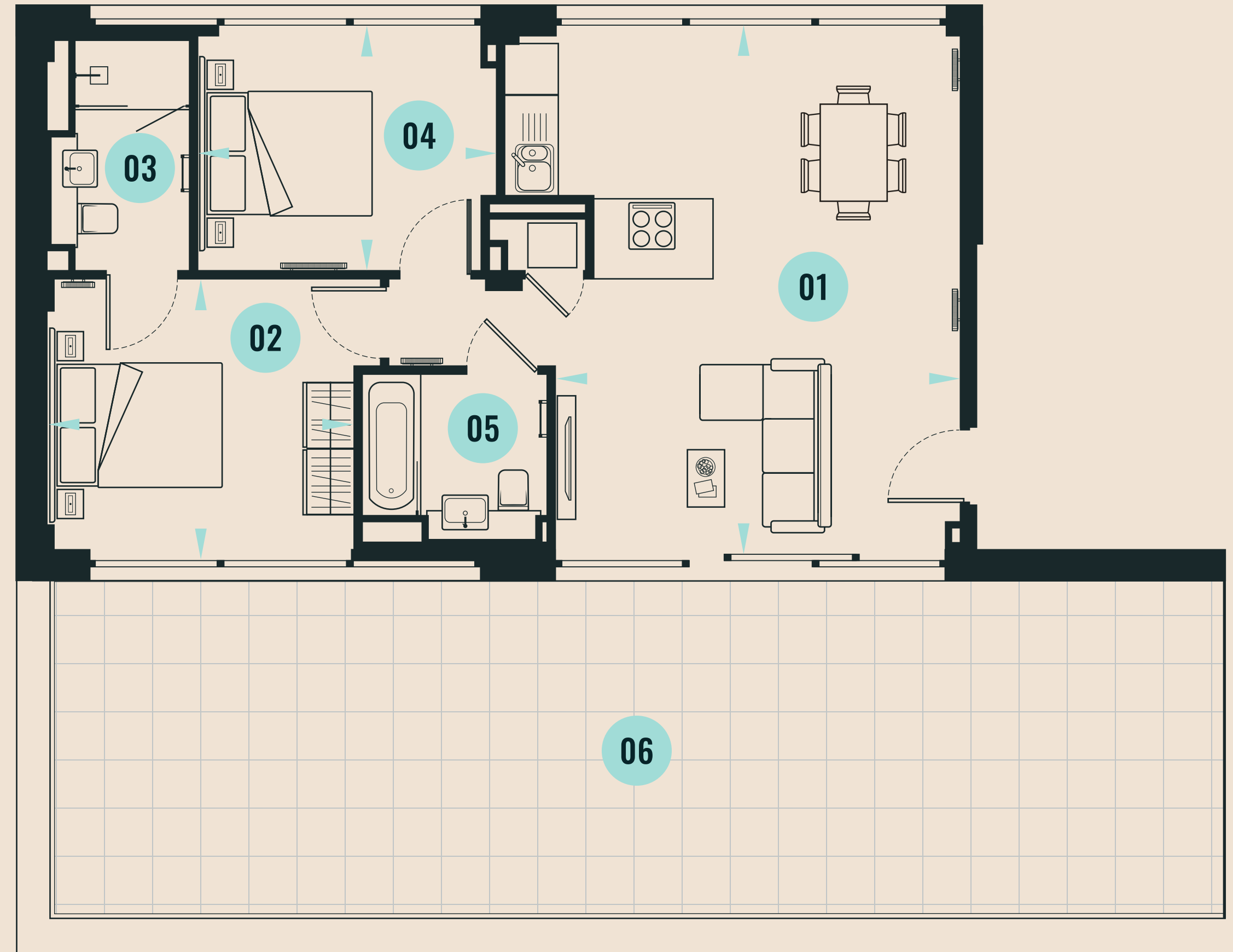
02 BEDROOM 1

03 ENSUITE

04 BEDROOM 2

05 BATHROOM

06 TERRACE



PHOTOGRAPHY IS INTENDED FOR ILLUSTRATIVE PURPOSES ONLY AND SHOULD BE TREATED AS GENERAL GUIDANCE ONLY. ALL THE PARTICULARS IN THIS BROCHURE WERE CORRECT AT TIME OF PRODUCTION.

Customers should note these illustrations are an example of this apartment type. Furniture layout is for illustrative purposes only. Homes may be 'handed' (mirror image) versions of the illustrations. Detailed plans and specifications are available for inspection for each unit type and customers must check their individual specifications prior to making a reservation.



YOUR NEW URBAN RETREAT

For more information or to arrange a viewing please
call 0203 770 2099 or email info@neptunewharflondon.com


[NEPTUNEWHARFLONDON.COM](https://neptunewharflondon.com)

NEPTUNE WHARF, GRINSTEAD ROAD, LONDON SE8 5FN



Join the community
[@neptunewharf](https://www.instagram.com/neptunewharf)

SABLE
CAPITAL

 DESIGNED BY SOCIETYSTUDIOS.CO.UK

PHOTOGRAPHY IS INTENDED FOR ILLUSTRATIVE PURPOSES ONLY AND
SHOULD BE TREATED AS GENERAL GUIDANCE ONLY. ALL THE PARTICULARS
IN THIS BROCHURE WERE CORRECT AT TIME OF PRODUCTION.


Galliard
Homes